

# Customer Information Sheet

IF IN DOUBT - ASK



NOT TO SCALE

THIRD ANGLE PROJECTION

ALL DIMENSIONS IN mm

**NOTE:**

**1. Material Specification :**

- Housing : PA9T , Black
- Contact : C7025
- EMI Spring : SUS316
- Front Shell : SUS316
- Shell : SUS304
- Middle Blade: SUS301

**2. Plating Specification :**

- Contact:
  - Ni 50u" Min. under plated overall .
  - Au Gold Flash plated on the functional area of contact
  - Au Gold Flash plated on solder area.

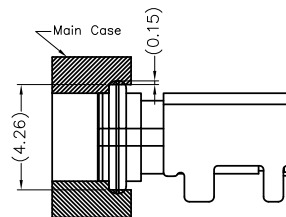
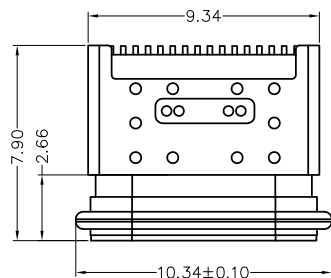
- Shell :
  - Ni 50u" Min. under plated over all.

**3. Electrical Characteristics:**

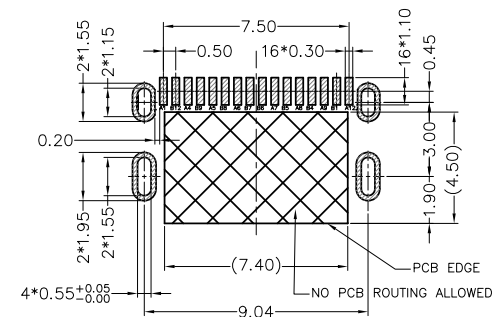
- Contact Resistance : 40mΩ Max for initial.  
10mΩ change after test.  
Measure at 20mV, 100mA.
- Contact Current Rating : 5A for collectively power supply  
Pin(PinA1,A4,A9,A12,B4,B9,B12;  
1.25A for Vconn pin; 0.25A for other  
signal pin.
- Dielectric Withstanding Voltage : 100V AC R.M.S.
- Insulation Resistance : 100MΩ Min.
- Operating Temperature : -40°C -85°C

**4. Mechanical Characteristic :**

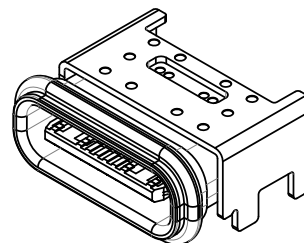
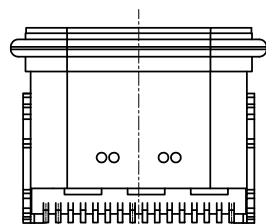
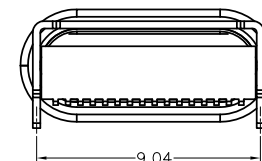
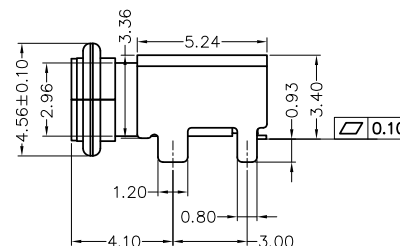
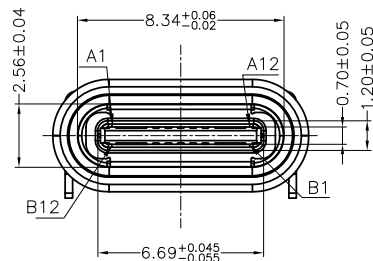
- Mating Force : 5-20N.
- Unmated Force : 8-20N Initial test;  
6-20N Durability after test
- Durability : 10,000 Cycles.



PANEL CUT-OUT REFERENCE



RECOMMENDED PCB LAYOUT  
(Tolerance=±0.05)



3D SHOWN

**PART NUMBER**

MM USBC - 20 16 BF - SM - WP -XX

Gen 2.0

No of Pins = 16 pin

Plating :  
 GO = Gold Flash  
 GB = 3u" Gold plating  
 GC = 5u" Gold plating  
 GD = 15u" Gold plating  
 GF = 30u" Gold plating

PIN	Signal Name	Description	PIN	Signal Name	Description
A1	GND	Ground return	B12	GND	Ground return
A4	Vbus	Bus Power	B9	Vbus	Bus Power
A5	CC1	Configuration Channel	B8	SBU2	Sideband Use (SBU)
A6	Dp1	Positive half of the USB 2.0 differential pair-Position 1	B7	Dn2	Negative half of the USB 2.0 differential pair-Position 2
A7	Dn1	Negative half of the USB 2.0 differential pair-Position 1	B6	Dp2	Positive half of the USB 2.0 differential pair-Position 2
A8	SBU1	Sideband Use (SBU)	B5	CC2	Configuration Channel
A9	Vbus	Bus Power	B4	Vbus	Bus Power
A12	GND	Ground return	B1	GND	Ground return

AT	1	22OCT25	--
NAME	ISS.	DATE	CN/CO
APPROVED: WALKER/MEIYU			
CHECKED: THIRI			
DRAWN: UNE			



www.harwin.com

**TOLERANCES**  
 X. = NA mm  
 X.X = ± 0.25 mm  
 X.XX = ± 0.15 mm  
 X.XXX = ± 0.05 mm  
**ANGLES = ±2°**  
 UNLESS STATED

THIS DRAWING AND ANY INFORMATION OR DESCRIPTIVE MATTER SET OUT HEREON ARE CONFIDENTIAL AND COPYRIGHT PROPERTY OF THE HARWIN GROUP AND MUST NOT BE DISCLOSED, LOANED, COPIED OR USED FOR MANUFACTURING, TENDERING OR FOR ANY OTHER PURPOSE WITHOUT THEIR WRITTEN PERMISSION.

**MATERIAL & FINISH:**

SEE ABOVE

**TITLE:**

USB Type C Waterproof Female  
Top Mount SMT Solder (16P)

**DRAWING NUMBER:**

MMUSBC-2016BF-SM-WP-XX

1 SHT  
OF  
2

# Customer Information Sheet

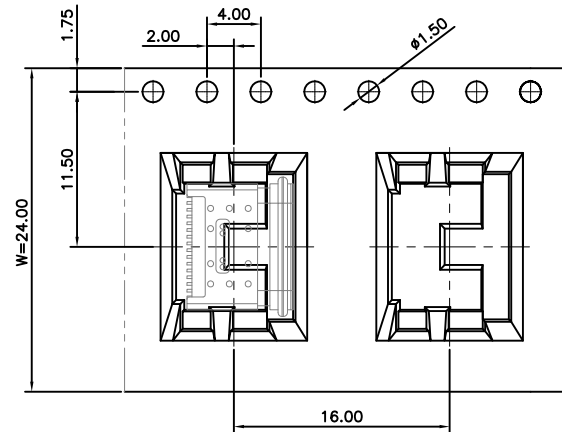
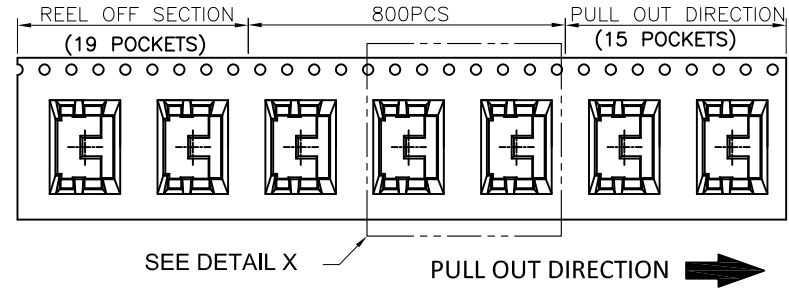
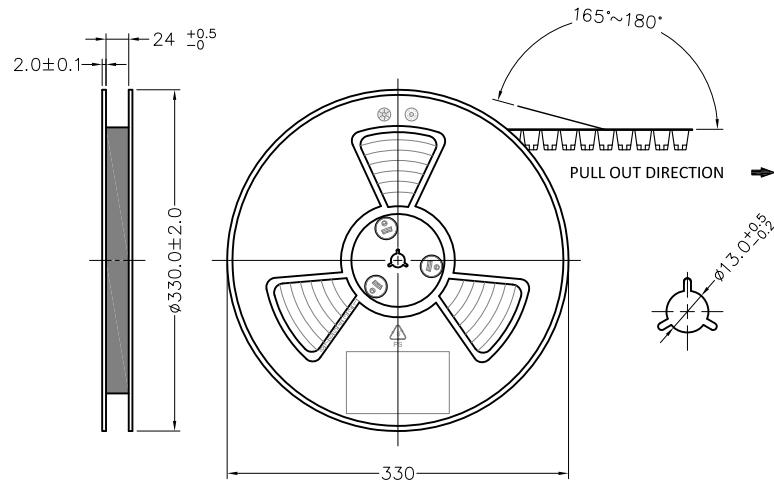
IF IN DOUBT - ASK

© UNE

NOT TO SCALE

THIRD ANGLE PROJECTION

ALL DIMENSIONS IN mm



QTY/REEL	REEL/CARTON	QTY/CARTON
800	10	8000

AT	1	22OCT25	--
NAME	ISS.	DATE	CN/CO
APPROVED: WALKER/MEIZY			
CHECKED: THIRI			
DRAWN: UNE			

# HARWIN

www.harwin.com

**TOLERANCES**  
 X. = NA mm  
 X.X = ± 0.25 mm  
 X.XX = ± 0.15 mm  
 X.XXX = ± 0.05 mm  
**ANGLES = ± 2°**  
 UNLESS STATED

THIS DRAWING AND ANY INFORMATION OR DESCRIPTIVE MATTER SET OUT HEREON ARE CONFIDENTIAL AND COPYRIGHT PROPERTY OF THE HARWIN GROUP AND MUST NOT BE DISCLOSED, LOANED, COPIED OR USED FOR MANUFACTURING, TENDERING OR FOR ANY OTHER PURPOSE WITHOUT THEIR WRITTEN PERMISSION.

**MATERIAL & FINISH:**  
  
 SEE ABOVE

**TITLE:**  
 USB Type C Waterproof Female  
 Top Mount SMT Solder (16P)

**DRAWING NUMBER:**  
 MMUSBC-2016BF-SM-WP-XX

SHT  
 2 OF  
 2